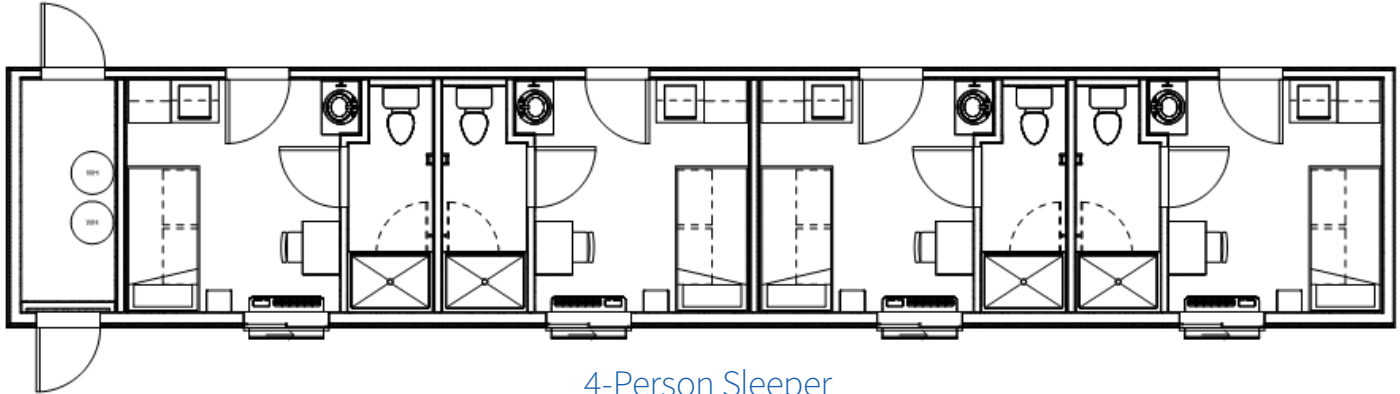




\$145,979

AVAILABLE: Ready-to-Deploy Interim Housing

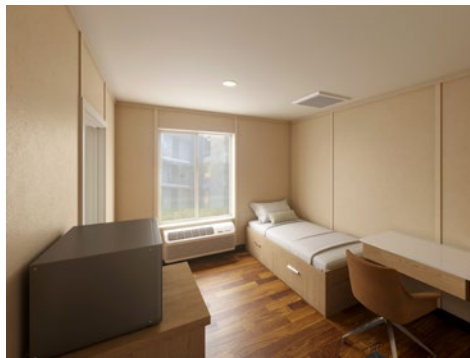
Pricing FOB Boise, Idaho



4-Person Sleeper

65' L x 11' 10" W

152 sq ft Rooms | 112 sq ft Bedroom | 40 sq ft Bathroom



INTERIM HOUSING

Flexible Design & Unlimited Configurations

UNIT DESCRIPTION

- Ready to Deploy
- Easy transport & relocation
- Fire Sprinkled
- Individual Rooms
- Private Bathrooms
- Dignified Living

Guerdon's Sleeper Units deliver cost-effective interim shelter swiftly, accommodating extended use and adaptability. These quick-build units are constructed as individual modules, offering flexibility to adjust your development based on site size and community demands. Crafted to superior quality, they ensure lasting performance for decades, serving as either long-term solutions or transitional housing pending permanent development.

For More Information Contact Us:

208-345-5100

information@guerdon.com | www.Guerdon.com

Tommy Rakes

CEO, Guerdon, LLC

Tommy.Rakes@Guerdon.com | 540.488.5404 Cell





INTERIM HOUSING SPECS.



ROOM AMENITIES

- Bed
- Desk
- Closet
- HVAC
- Sink
- Shower
- Toilet

CODE SPECS

- 2018 IBC, R-1 Occupancy Compliant
- 1-Hour Fire Rating, Exterior walls
- 1-Hour Fire Rating, Interior walls
- Minimum 50 STC Ratings
- 89 mph wind zone w/ 115 mph gust
- Seismic Category II
- Fire Sprinklers Installed

IBC Build vs HUD Standards

Factory-built IBC construction surpasses Manufactured Housing Construction Standards (MHCS) or HUD projects due to tailored adherence to local codes, addressing unique climate and seismic needs, along with consistent updates for the latest safety and construction standards.



For More Information Contact Us:

208-345-5100 | information@guerdon.com | www.Guerdon.com