



4-Person Water Heater Module

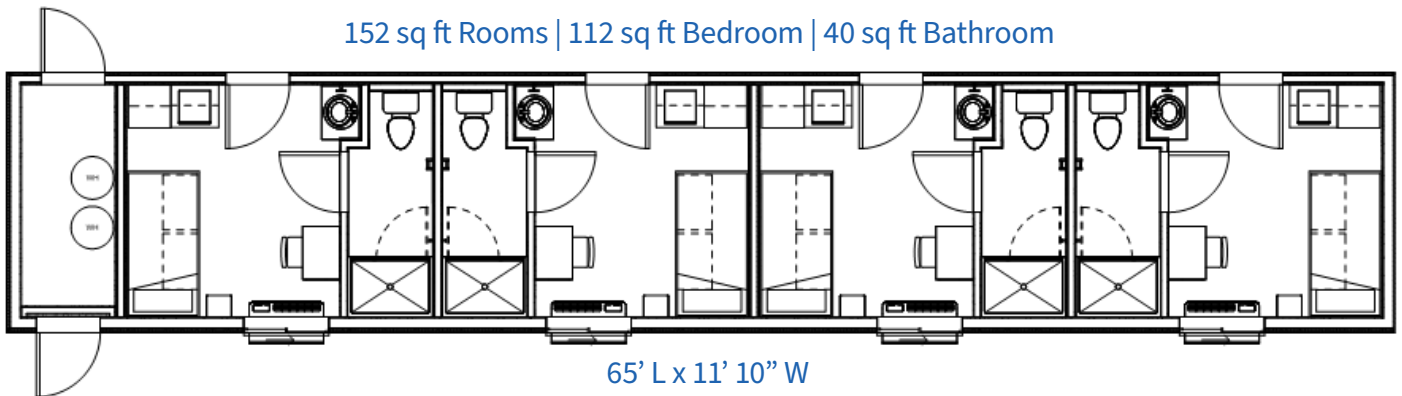
SINGLE OCCUPANCY PRIVATE BED/BATH

AVAILABLE: Ready-to-Deploy



These pre-fabricated units provide a rapid and cost-effective solution for shelter. Their adaptability allows you to tailor your development to the site size and housing requirements. Superior quality of craftsmanship and materials ensure enduring performance for many decades, making them suitable for both long-term solutions or relocateable temporary housing.

152 sq ft Rooms | 112 sq ft Bedroom | 40 sq ft Bathroom

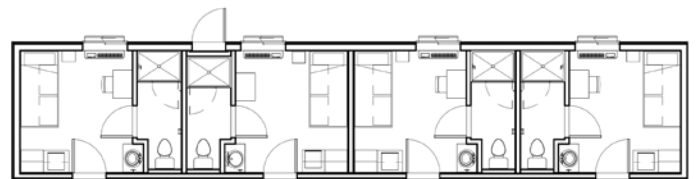


Each module includes four single occupancy rooms and a dedicated mechanical room, simplifying electrical and plumbing connections.

Water heaters placed in a single module on a continuous loop can efficiently supply up to four modules; feeding a total of 16 units.

Designed for modularity, each unit offers versatility, functioning independently as a 4-room property standalone structure or seamlessly connecting end-to-end and parallel to form an expansive dorm wing.

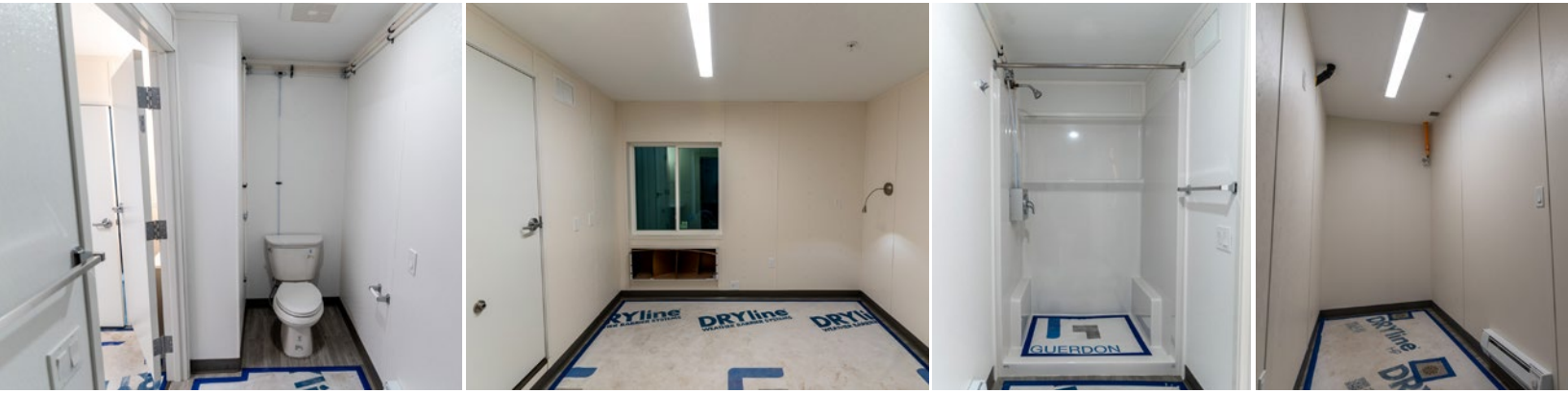
COMPATIBLE MODULES



4-Person Sleeper Module



4-Person Laundry Module



Features & Specifications

ROOM FEATURES

- Lights, Outlets, & Switches
- Wardrobe Cabinet
- Reading Light
- Vinyl Flooring
- Vinyl on Gyp Walls
- Smoke Detectors
- Fire Sprinklers
- Vanity with Sink & Faucet
- 3 Blub Vanity Light
- Towel Ring
- Mirror/Medicine Cabinet

ROOM NOTES

- Conduit & Pull String provided for Fire Alarms
- PTACs framed in but not installed
- Does not include beds or nightstands

BATHROOM FEATURES

- Shower & Fixtures
- Toilet
- Toilet Paper Holder
- Exhaust Fan
- Towel Rod
- Baseboard Heater & Switch
- Bathroom Floor Step Up & Exposed Water Pipes for Maintenance & Freeze Prevention

ELECTRICAL CLOSET

- Electrical Panels & Breakers
- Power to the unit to be fed up conduit from underside

MECHANICAL ROOM

- All plumbing and electrical routed to mechanical room.
- Utility connections happen onsite, under the unit.
- Water Heaters not installed, to be determined by end use.

EXTERIOR FEATURES

- TPO Roof System
- Metal Exterior Doors
- Metal Siding
- 48"x48" Vinyl Windows

EXTERIOR NOTES

- Can deliver on Chassis or install on foundation.
- Exterior siding intentionally left off for connecting units. If used as standalone units, siding will need to be installed.
- Exterior Light fixtures to be installed
- Stairs, steps, & landings need to be added after setup

SCAN for Video Tour:



Standalone OR Connected Dorm Wing

